



Microsoft Dynamics NAV Source Protection









Microsoft Dynamics NAV Source Protection Utility

1. Purpose

Functionality of **Microsoft Dynamics NAV Source Protection** is intended for protection of a source code of **Microsoft Dynamics NAV** objects against viewing, copying and modification.

2. Types of protected objects

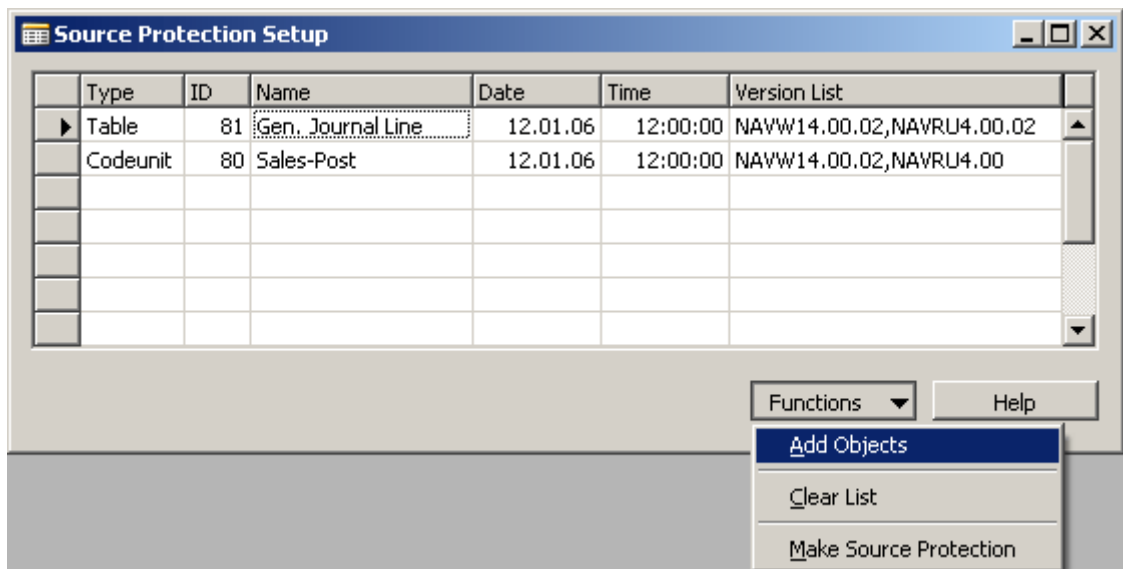
Microsoft Dynamics NAV Source Protection carries out protection of a source code of the following types of the objects:

-  Table
-  Form
-  Report
-  Dataport
-  XMLport
-  Codeunit

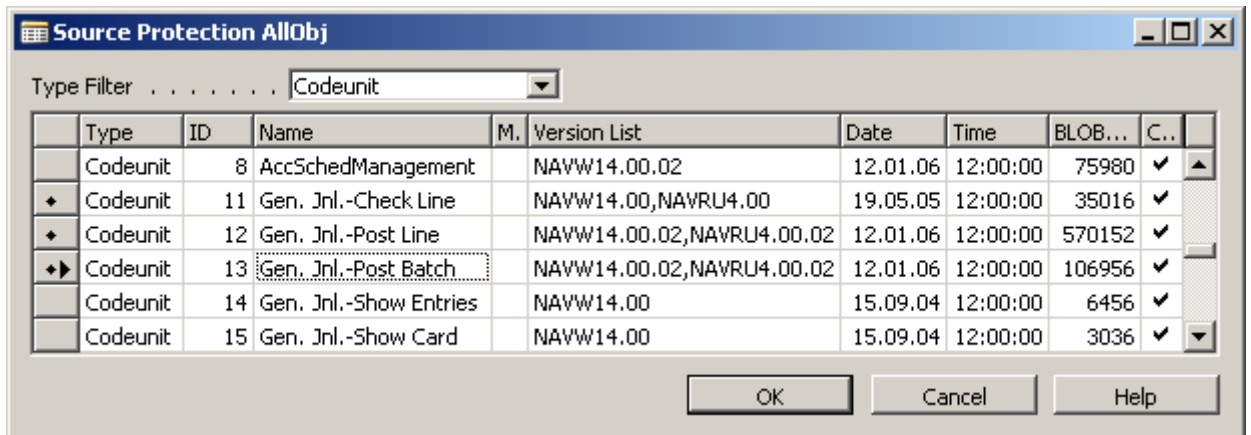
3. Functionality description

In the form of **Source Protection Setup** it is necessary to specify the objects which source code must be protected.

It is possible either to add objects one by one, using the fields **Type** and **ID** or to use the function **Add Objects (Functions-> Add Objects)**:



At choosing of the function **Add Objects** the form **Source Protection AllObj** opens where the necessary objects must be marked by means of markers and **OK** pressed:

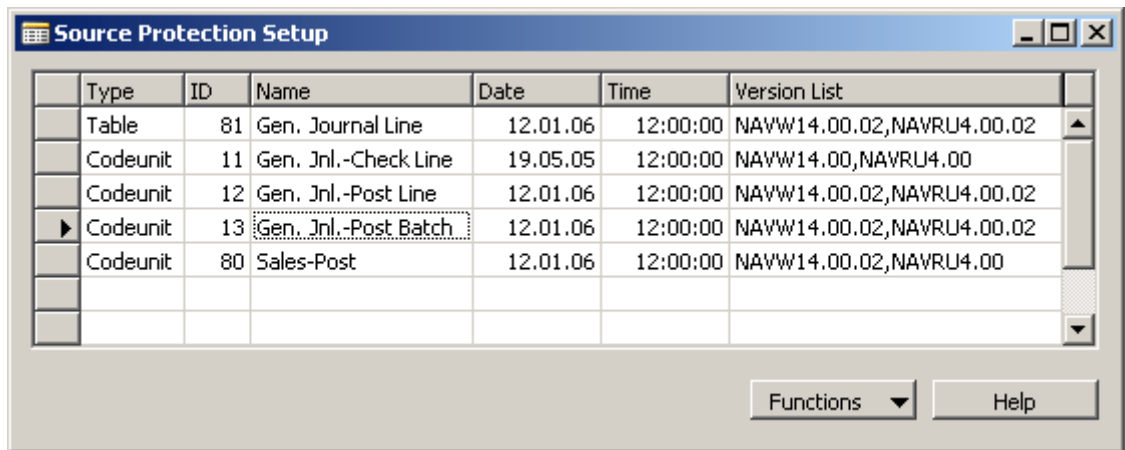


The dialog box 'Source Protection AllObj' has a 'Type Filter' dropdown set to 'Codeunit'. It contains a table with the following data:

Type	ID	Name	M.	Version List	Date	Time	BLOB...	C..
Codeunit	8	AccSchedManagement		NAVW14.00.02	12.01.06	12:00:00	75980	✓
Codeunit	11	Gen. Jnl.-Check Line		NAVW14.00,NAVRU4.00	19.05.05	12:00:00	35016	✓
Codeunit	12	Gen. Jnl.-Post Line		NAVW14.00.02,NAVRU4.00.02	12.01.06	12:00:00	570152	✓
Codeunit	13	Gen. Jnl.-Post Batch		NAVW14.00.02,NAVRU4.00.02	12.01.06	12:00:00	106956	✓
Codeunit	14	Gen. Jnl.-Show Entries		NAVW14.00	15.09.04	12:00:00	6456	✓
Codeunit	15	Gen. Jnl.-Show Card		NAVW14.00	15.09.04	12:00:00	3036	✓

Buttons: OK, Cancel, Help

Marked objects will be added in the form **Source Protection Setup**:

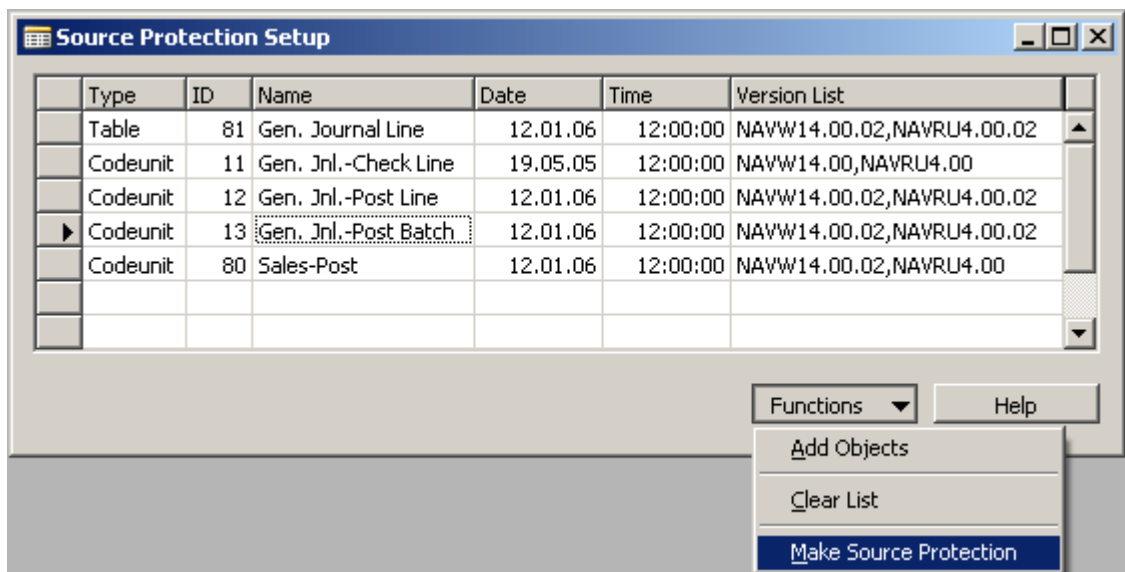


The dialog box 'Source Protection Setup' contains a table with the following data:

Type	ID	Name	Date	Time	Version List
Table	81	Gen. Journal Line	12.01.06	12:00:00	NAVW14.00.02,NAVRU4.00.02
Codeunit	11	Gen. Jnl.-Check Line	19.05.05	12:00:00	NAVW14.00,NAVRU4.00
Codeunit	12	Gen. Jnl.-Post Line	12.01.06	12:00:00	NAVW14.00.02,NAVRU4.00.02
Codeunit	13	Gen. Jnl.-Post Batch	12.01.06	12:00:00	NAVW14.00.02,NAVRU4.00.02
Codeunit	80	Sales-Post	12.01.06	12:00:00	NAVW14.00.02,NAVRU4.00

Buttons: Functions, Help

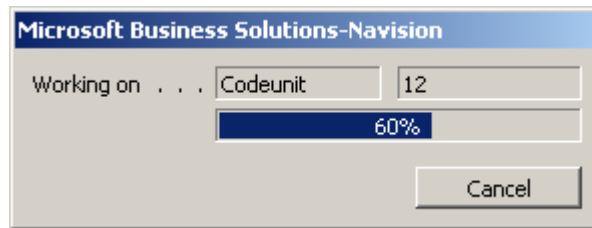
To start the process of removal of the source code from the chosen objects it is necessary to press **Make Source Protection (Functions -> Make Source Protection)**:



The dialog box 'Source Protection Setup' is shown with the 'Functions' menu open. The menu items are:

- Add Objects
- Clear List
- Make Source Protection**

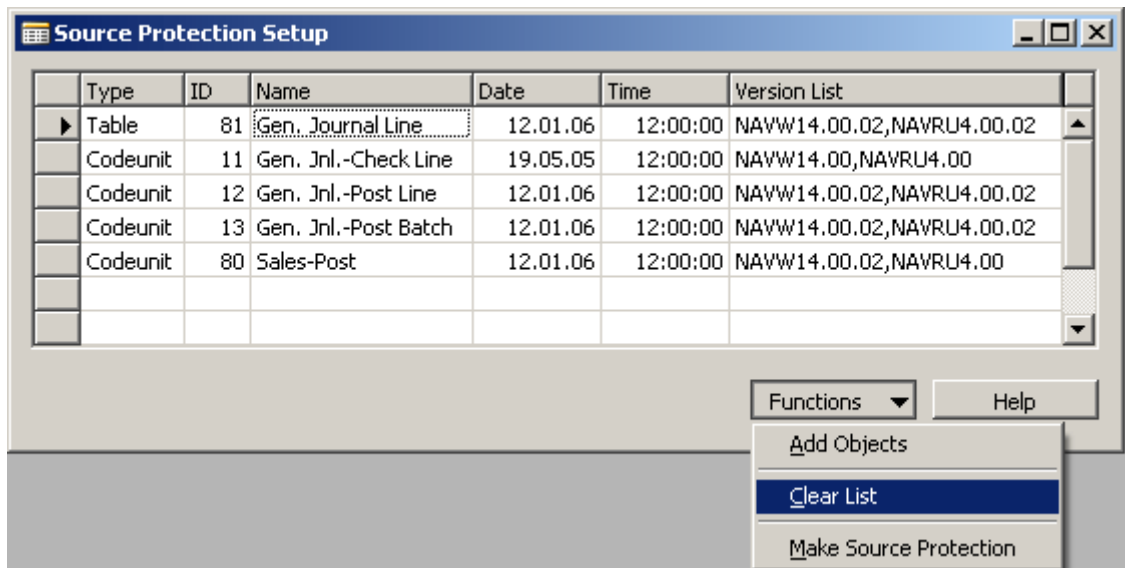
The window will open showing what object is being processed and the general progress of the process:



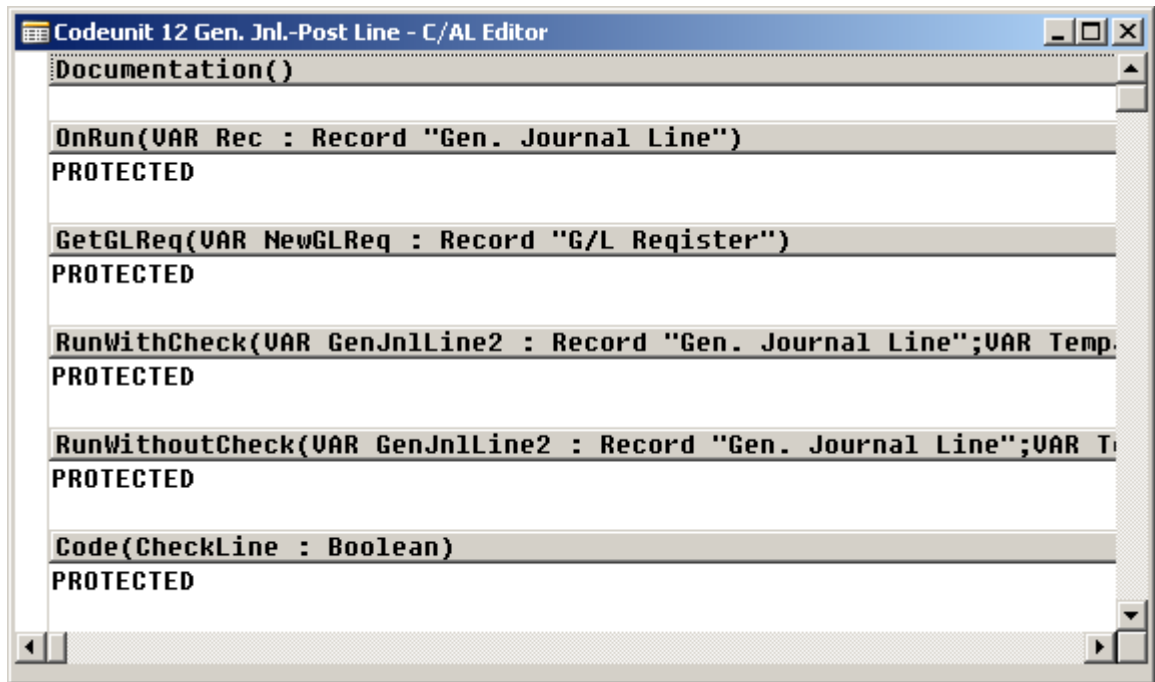
On completion of the objects processing the above window will be closed.

Removal of the source code from the chosen objects is completed.

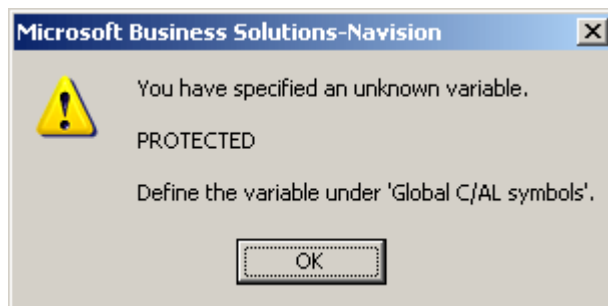
For clearing of the form **Source Protection Setup** it is possible to use the function **Clear List (Functions-> Clear List)**:



After protection the object will look as follows:



The word **PROTECTED** is placed instead of a source code for protection of the object against random compilation. At the attempt to compile the protected object the following message will appear:

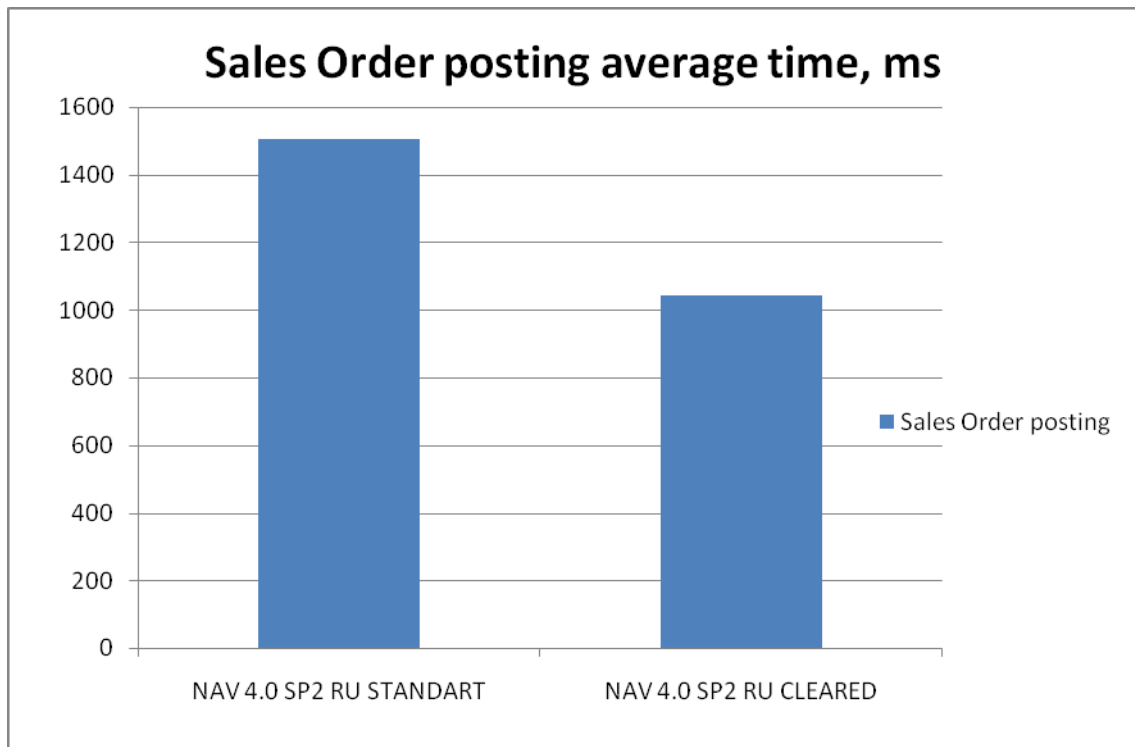


4. Performance of the protected DB

The protected objects are processed with higher speed at the first loading by the client of **Microsoft Dynamics NAV** because of the absence in them of the source code. The results of the test measuring the time of the first sales order posting process after opening of DB are given below.

The Test was made with the help of the client of **Microsoft Dynamics NAV**, version **4.0 SP2**; **Microsoft SQL Server 2000 SP4** was used as a server.

Bases - a standard DB, version **4.0 SP2 RU** (marked as **NAV 4.0 SP2 RU STANDART**) and its copy from all objects of which the source code is removed (marked as **NAV 4.0 SP2 RU CLEARED**):



In this case the speed of primary processing of the objects has increased for 30.83 %.

5. Features of the technical solutions

Functionality of **Microsoft Dynamics NAV Source Protection** is realized in the form of four objects of **Microsoft Dynamics NAV** in a separate range and can be imported to any DB of **Microsoft Dynamics NAV**.

The Objects of **Microsoft Dynamics NAV** with which the clients of **Microsoft Dynamics NAV** of versions from **3.60** on **4.0 SP3** work are supported.

6. An opportunity of the source code restoration

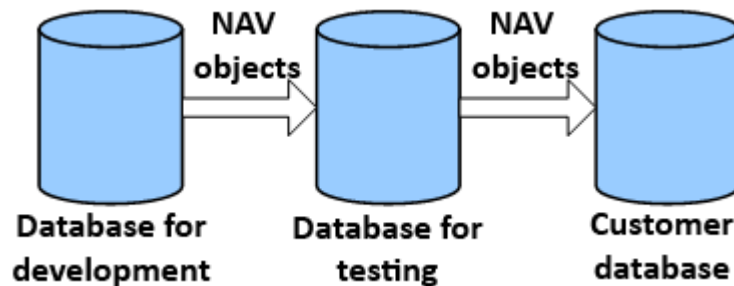
The source code is physically removed from the object during protection which provides a high level of protection.

7. Carry of objects to a DB of the customer

Transfer of the objects of **Microsoft Dynamics NAV** between bases will be considered using as an example the project of support where the chain of the objects usually looks as follows:



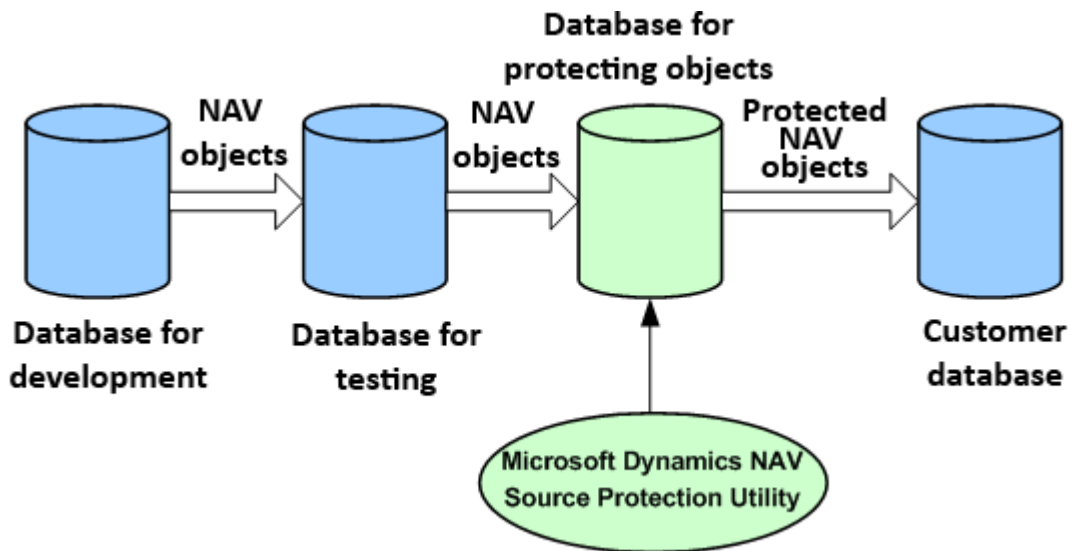
Basic transfer of the objects



From the base where the development is carried out the Objects are transferred to the test base, from which in case of successful acceptance of rework they are sent to the database of the customer.

If the utility of **Microsoft Dynamics NAV Source Protection** is used, the chain is modified:

Transfer of the protected objects



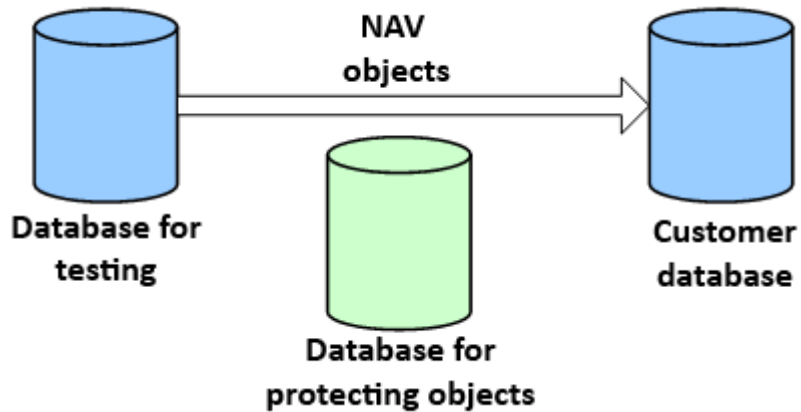
The DB for protecting objects is logically located between the DB of testing where objects are stored in not protected form, and the DB of the customer where objects must be protected.

Objects are transferred to this DB from a DB of testing and processed by the utility of **Microsoft Dynamics NAV Source Protection** which is in this base. After processing the objects become protected and are transferred to the DB of the customer.

If it is necessary to restore the source code of the objects in the DB of the customer, the necessary objects are simply transferred there from the DB of testing:



Restoration of a source code



8. Requirements to the Microsoft Dynamics NAV license

For the correct work of the solution in your **Microsoft Dynamics NAV** license, in addition to acquired **Microsoft Dynamics NAV Source Protection** granule, there must be the granules providing the reading and modification of **Microsoft Dynamics NAV** objects of the types which you want to protect. It can be one or several of the following granules:

Granule ID	Granule Name
7130	Table Designer
7120	Form Designer
7110	Report and Dataport Designer
7140	XML Port Designer
7200	Application Builder
7300	Solution Developer